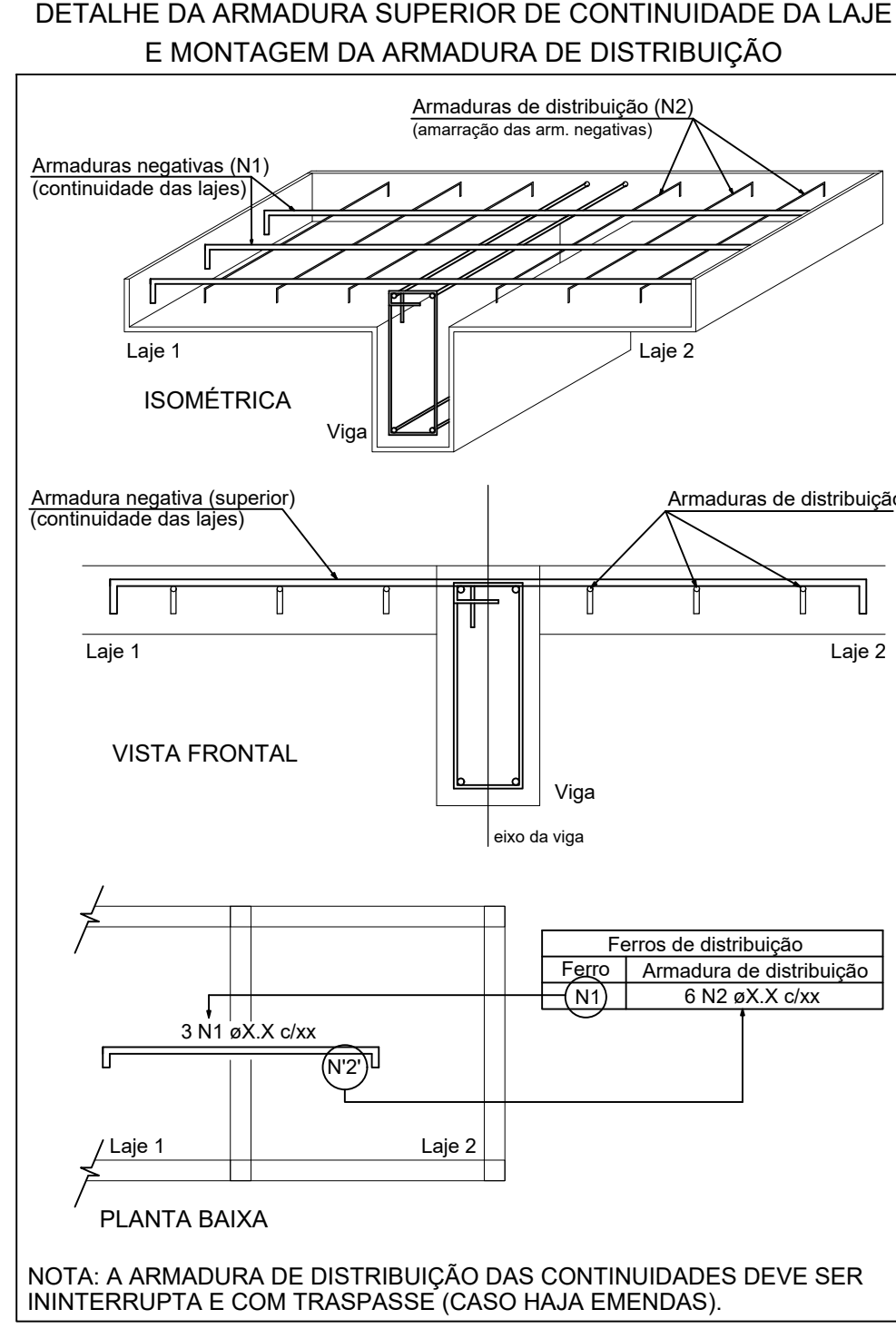
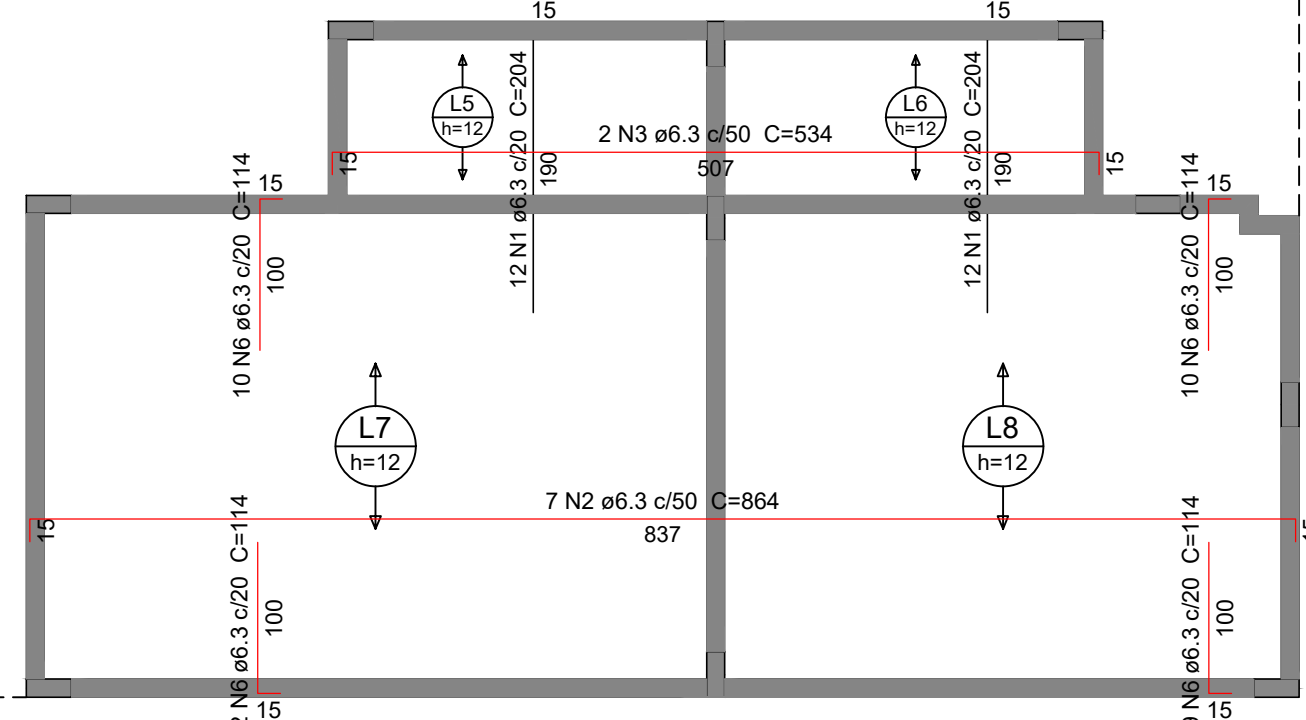
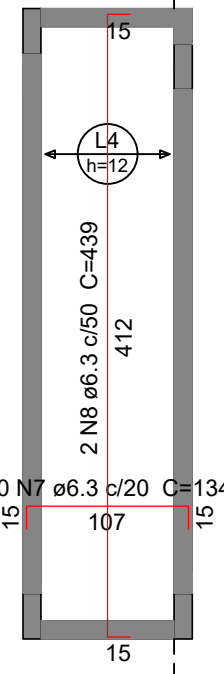
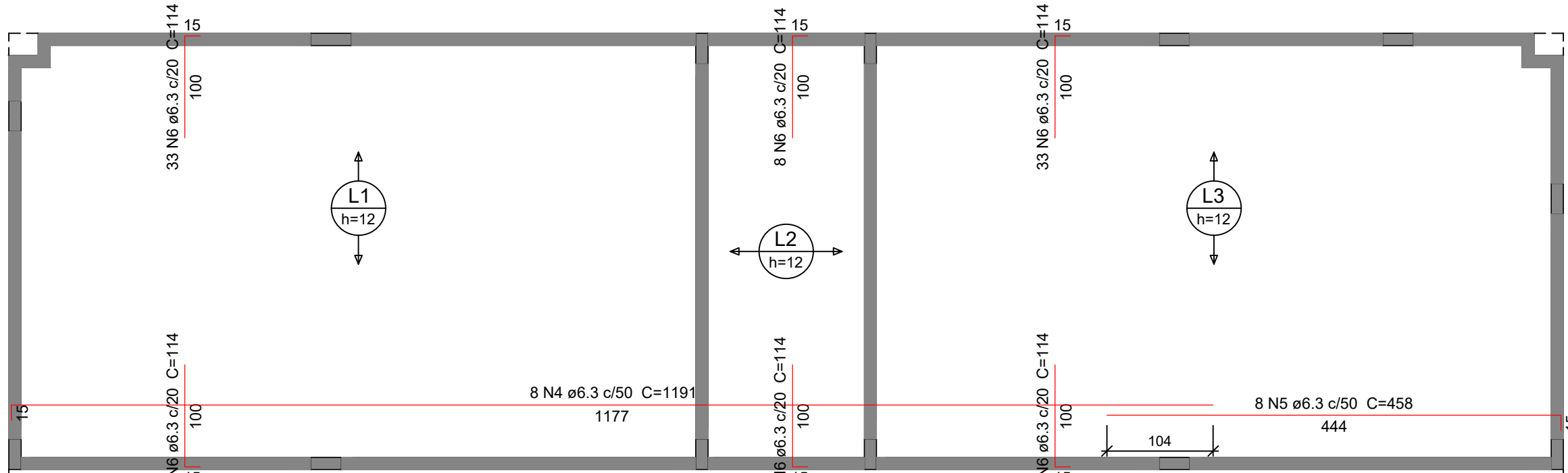
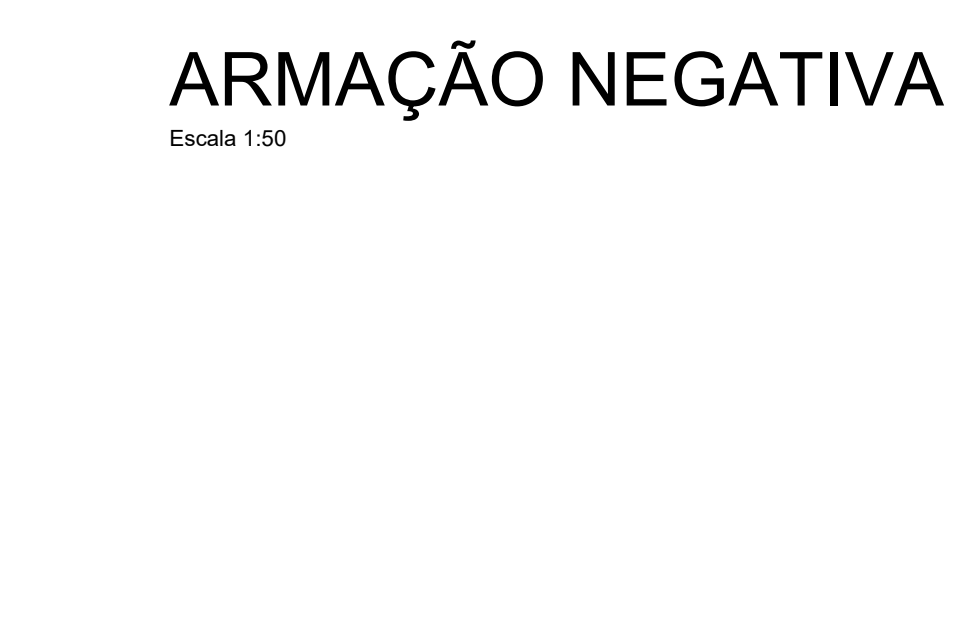
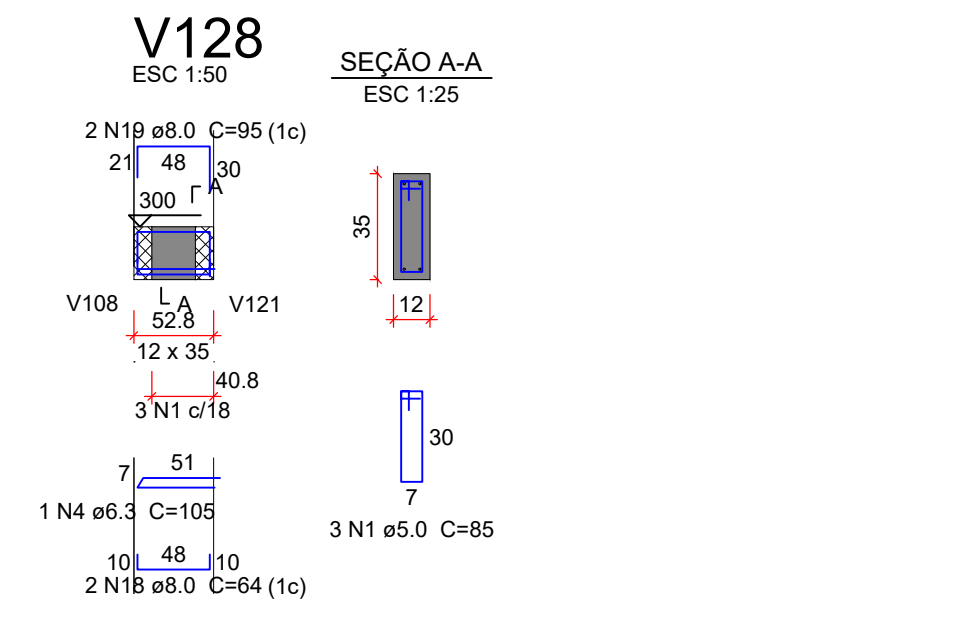
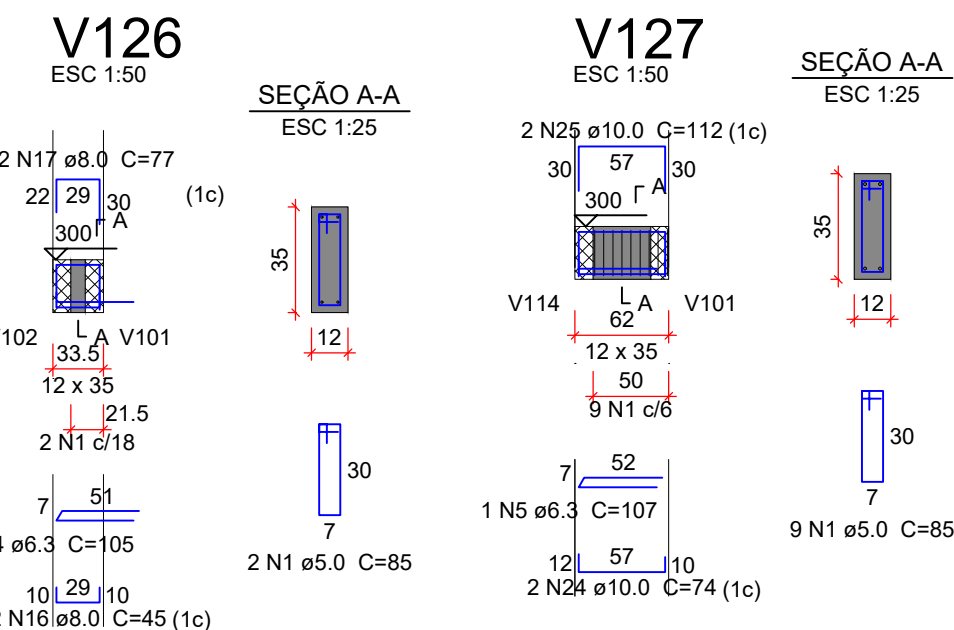
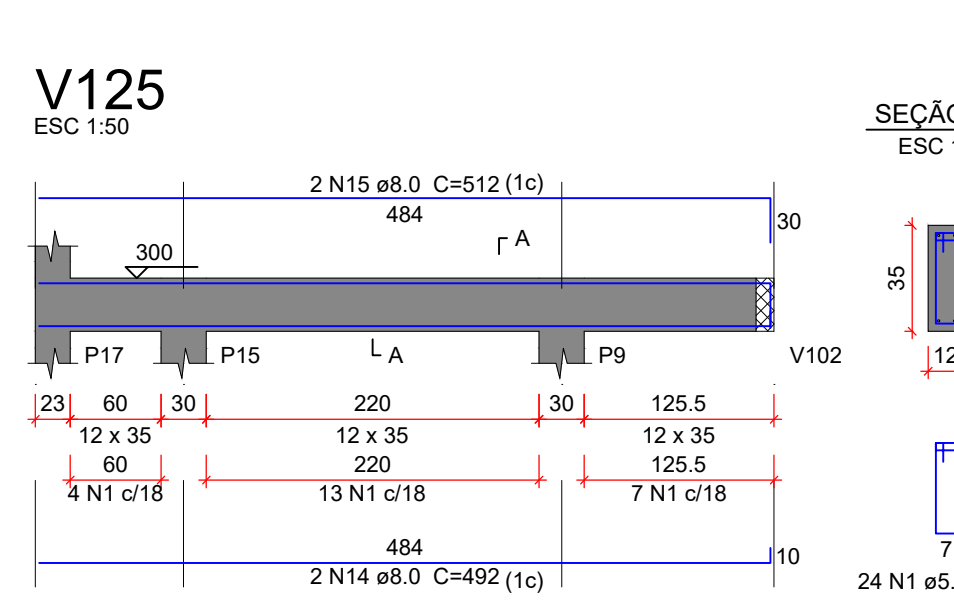
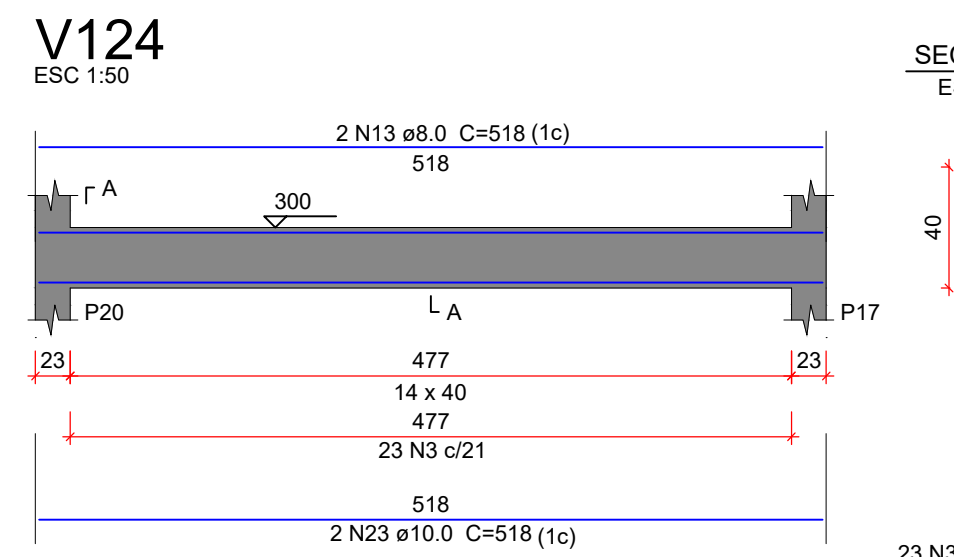
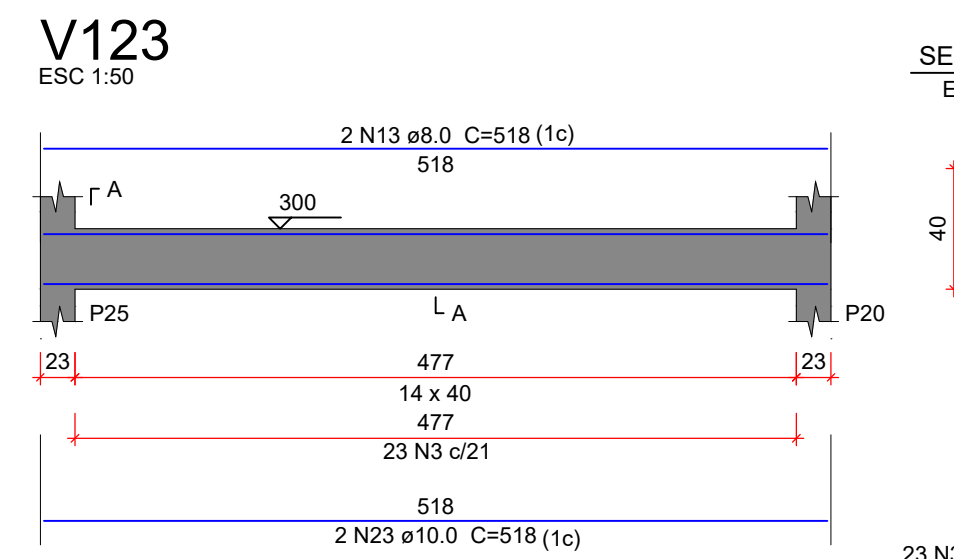
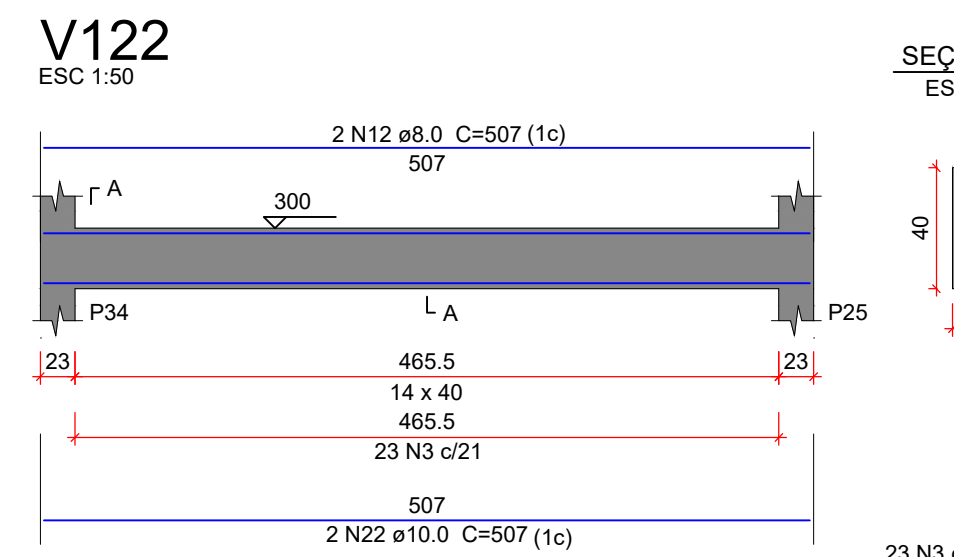
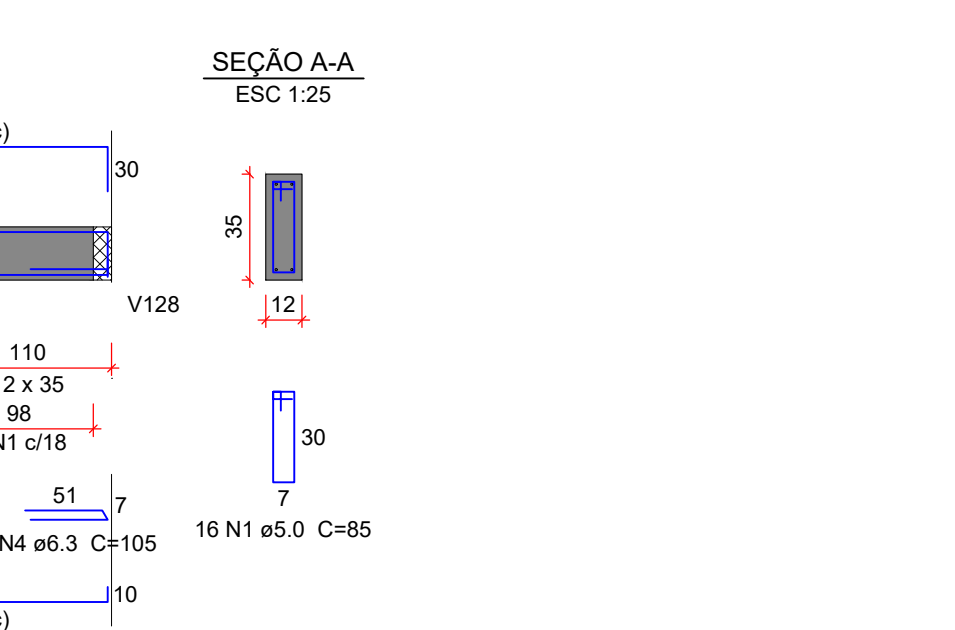
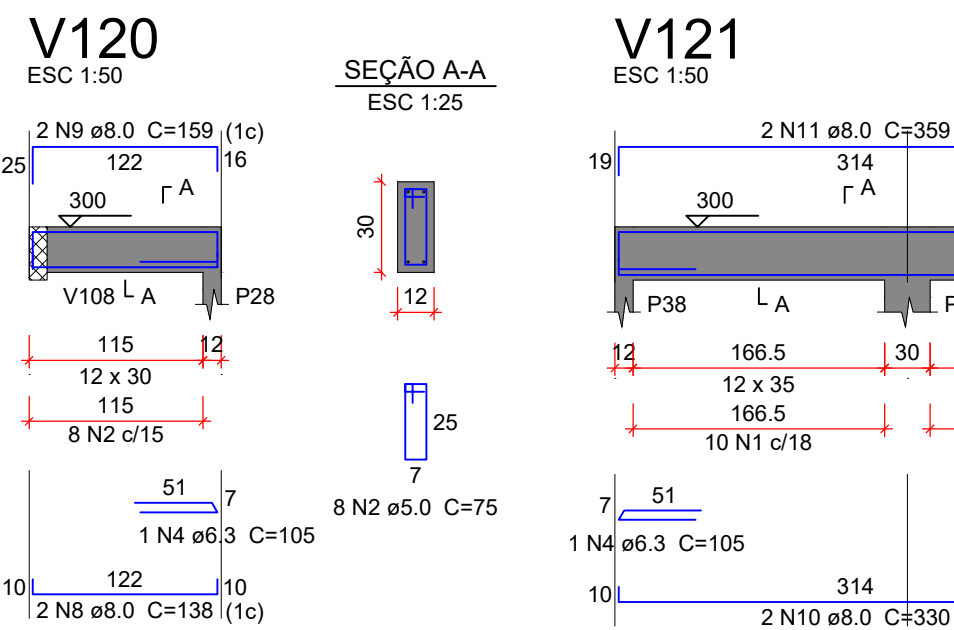
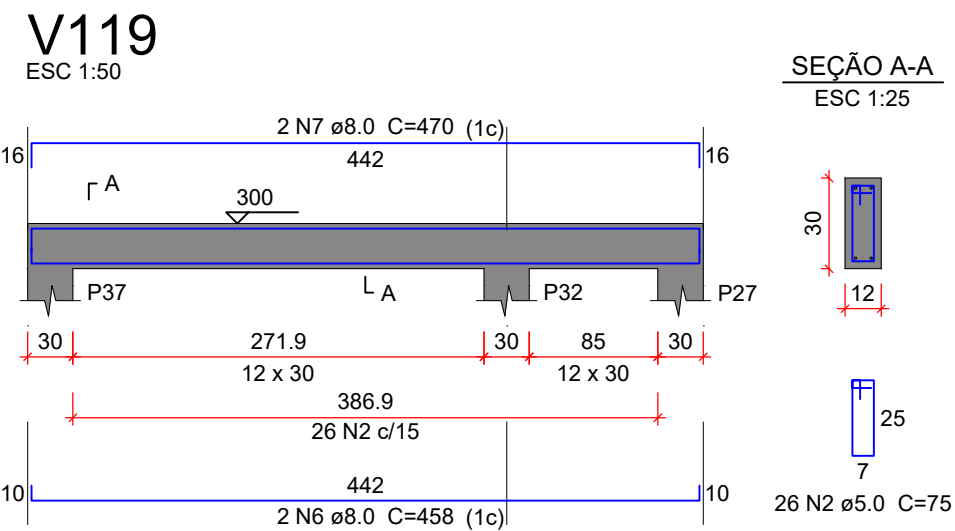
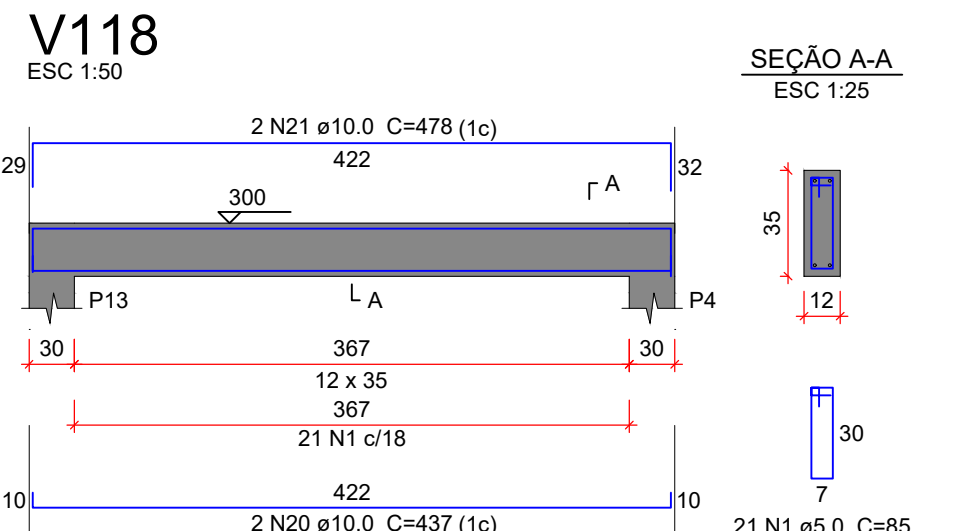


VIGAS NÍVEL +3.00m Fck = 25MPa



Relação do aço

AÇO	N	DIAM (mm)	QUANT	C.UNIT (cm)	C.TOTAL (cm)
V118					
V119					
V120					
V121					
V122					
V123					
V124					
V125					
V126					
V127					
V128					

Relação do aço

AÇO	N	DIAM (mm)	QUANT	C.UNIT (cm)	C.TOTAL (cm)
CA60	1	5.0	75	85	6375
	2	5.0	34	75	2550
	3	5.0	69	99	6831
CA50	4	6.3	5	105	525
	5	6.3	1	107	107
	6	8.0	2	458	916
	7	8.0	2	470	940
	8	8.0	2	138	276
	9	8.0	2	159	318
	10	8.0	2	330	660
	11	8.0	2	359	718
	12	8.0	2	507	1014
	13	8.0	4	518	2072
	14	8.0	2	492	984
	15	8.0	2	512	1024
	16	8.0	2	45	90
	17	8.0	2	77	154
	18	8.0	2	64	128
	19	8.0	2	95	190
	20	10.0	2	437	874
	21	10.0	2	478	956
	22	10.0	2	507	1014
	23	10.0	4	518	2072
	24	10.0	2	74	148
	25	10.0	2	112	224

Resumo do aço

AÇO	DIAM (mm)	C.TOTAL (m)	PESO + 10 % (kg)
CA50	6.3	6.4	1.7
	8.0	94.9	41.2
	10.0	52.9	35.9
CA60	5.0	157.6	26.7
PESO TOTAL (kg)			
CA50		78.7	
CA60		26.7	

Volume de concreto (C-25) = 1.46 m³
Área de forma = 23.55 m²

ARMAÇÃO NEGATIVA DAS LAJES DO PAVIMENTO TOPO PILARES

Escala 1:50

Relação do aço

Negativos Y

AÇO	N	DIAM (mm)	QUANT	C.UNIT (cm)	C.TOTAL (cm)
CA50	1	6.3	24	204	4896
	2	6.3	7	864	6048
	3	6.3	2	534	1068
	4	6.3	8	1191	9528
	5	6.3	8	458	3664
	6	6.3	209	114	23826
	7	6.3	20	134	2680
	8	6.3	2	439	878

Resumo do aço

AÇO	DIAM (mm)	C.TOTAL (m)	PESO + 10 % (kg)
CA50	6.3	525.9	141.6
CA50			141.6

ORGÃOS PÚBLICOS

PROJETO ESTRUTURAL

TIPO DE EMPREENDIMENTO
PÚBLICO

DATA
OUT/2025

CONTEÚDO
VIGAS FORMA LAJE - PAV. +3.00m
ARMAÇÃO NEGATIVA LAJE

PRANCHA
07/07

PREFEITURA DO MUNICÍPIO DE MERCEDES
DEPARTAMENTO DE ENGENHARIA

RUA DR. OSVALDO CRUZ, 555 CEP 85998-000 MERCEDES-PR FONE: (45) 3256-8045

PROJETO: _____
ENG. CIVIL CRISTIAN COMIN
CREA: PR - 214577 / D

EXECUÇÃO: _____

PROPRIETÁRIO: _____
MUNICÍPIO DE MERCEDES
CNPJ: 95.719.373/0001-23

OBRA: BARRAÇÃO PRÉ-MOLDADO - 240M2
LOCAL: ESTRADA VICINAL RURAL DA LINHA SANGA ALEGRE - LOTE RURAL 56/B - 38° PER. - MERCEDES / PR
PROPRIETÁRIO: MUNICÍPIO DE MERCEDES